

GE Healthcare

Precisely Your View

Uroview FD

Digital Imaging Suite
for Urology



Authorized Distributor
GE Healthcare

GE OEC is an authorized distributor of Uroview FD which is manufactured by PAUSCH Medical GmbH, Germany

Uroview FD

Digital Imaging Suite for Urology



The Uroview FD was developed precisely for your view.

It combines robust imaging capabilities with smart patient access to improve workflow and ergonomics. Uroview FD is the only flat detector fixed urology system that comes with GE OEC field service and clinical teams, dedicated to maximizing the performance of your system and your team.

Achieve success in your urology room with the Uroview FD.

With...
Precision Imaging. Dynamic Workflow. Optimal Access. OEC Support.

Precision Imaging

View your images in superb detail on the Uroview FD's large, high-resolution monitors that use digital flat detector imaging technology.

See images clearly in a comprehensive range of cases.

High image quality and the ability to see tiny detail is critical to the success of your patient's treatment. The Uroview FD provides the large field of view that you require with a robust imaging platform, to meet your current and future imaging needs. The Uroview FD can show you exact imaging detail in multiple specialties and cases:

Abdominal radiography - (KUB)
Brachytherapy
Cystoscopy
Intravenous pyelography (IVP)
Retrograde Pyelogram
Percutaneous nephrolithotomy (PCNL)
TURP
Urodynamics

Lessen dose exposure without sacrificing image quality.

The Uroview FD is designed to provide diagnostic image quality using advanced dose saving strategies:

- Collimate your scout image without additional fluoroscopy shots and dose.
- Pulsed mode allows you to reduce dose to your staff, your patients, and anyone else in the room.
- A larger field of view captures the region of interest with fewer exposures.
- The anti-scatter grid can be disengaged with the click of a button to accommodate pediatric patients.

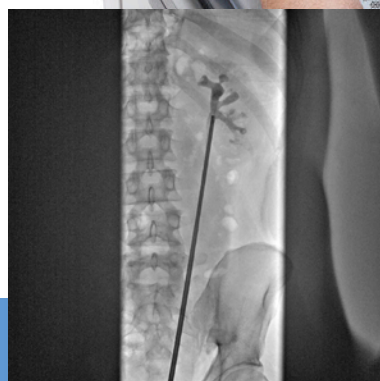


Image the entire (KUB) urological region with a single exposure using the 17 inch x 17 inch (43 cm x 43 cm) dynamic digital flat panel detector.



Visualize tiny stones with high image quality and superb grayscale range—even in dense anatomy. See clearly with 2880 x 2880 resolution and 16 bit image processing.



Large 24 inch dual LCD display capability and high dynamic color range help you see small details better.



Optimized detective quantum efficiency (DQE) of the dynamic digital flat detector helps improve resolution when imaging urologic anatomy.

Dynamic Workflow

From patient set-up to case cleanup, you have control with Uroview FD simplifying and maximizing the dynamic aspects of your workflow.

Easily capture a high quality image with automated intelligent processes, such as dynamic auto-brightness and automatic image correction.

Save time and dose by manipulating images post-processing without having to re-take the image.



Manage the procedure, perform post processing, and rapidly transfer DICOM data from a single control room.

Conveniently activate table functions with intuitive table side controls and robust foot pedals that are designed to reliably work even in wet environments. Take control while accurately capturing images.



Accommodate a wide range of patients—from pediatrics to adults up to 627 lbs (285 kg) — with the durable Uroview FD table. Easily select patient size from the system for optimized technique.

Access the patient quickly and easily with the compact open-area tower that provides space and full patient contact for you and your staff.

Seamlessly integrate and store third-party accessories, such as endoscopes, with the Uroview FD storage area.

Perform a wide array of procedures with additional accessories like the micturition seat for urodynmaics



Clean up easier with a hinged, carbon fiber patient table top, fewer cables to work around, and an optimized mechanical design for faster room turn-over.

Make it yours with standard and add-on accessories...



Collapsible drain bag system



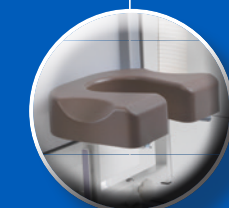
Elbow supports with pads



30 inch leg extension with pad



Arm support with pad



Micturition seat



Generator control



Remote control

Optimal Access

From transferring a single patient, to a full day's caseload, the advanced ergonomics and table positioning of the Uroview FD give you the best access to the patient and promote a comfortable environment for you and your staff.



The 25.2" low table height helps the staff with patient transfer and gives you direct access to the patient.



The integrated boom and articulating arm accommodate multiple monitor positions, that can be customized to meet your needs for different procedures.



With precise imaging chain movement, you can fine tune the image placement without manually repositioning your patient, saving valuable procedure time and promoting patient comfort.



Diverse table-top movements, such as elevation, transverse, longitudinal, Trendelenburg, and reverse Trendelenburg. Empower staff to correctly position the patient with less strain.

Freedom of movement.

- Easily transfer patients with an adjustable low table height (25.2 inches) with near 360 degree SmartAccess.
- Enjoy independent motorized gantry movement of 8 inches.
- Save and recall up to three key table positions.
- Adapt the Uroview FD to your room requirements with left or right configuration options.
- Get the right position with Trendelenburg movement of -20 to 88 degrees.

Optimal patient accessibility.

The Uroview FD is designed to provide better access to the patient.

- Get direct, unencumbered patient access from all four sides because of the lean tower. Now you can access the patient quickly in emergency situations.
- See the image while staying next to the patient from the large 24-inch articulating monitors.
- Quickly and precisely position the table for each procedure using the manual operating unit or the multifunction foot control.

Ergonomically focused features are designed to reduce fatigue and give you more control of the system and procedure.

OEC Support

Be confident in your Uroview FD because it's the only fixed urology system sold today that includes support from the dedicated and expert GE OEC clinical and service teams.



Make the confident choice.

Uptime matters to you and your patients. When you purchase a Uroview FD, dedicated GE OEC service and clinical teams will offer expert and meticulous support. A GE OEC team of support specialists is on call to maximize your uptime and your return on investment.



Delivering on a promise.

Every Uroview FD includes expert installation and on-site clinical training from GE OEC support experts. A certified Clinical Imaging Specialist stays with your staff during your initial orientation and training, and the GE OEC Clinical Excellence program provides you with electronic training that can be shared with your current and future staff members.

100% specialized in surgery.

The GE OEC dedicated team of more than 200 Field Service Engineers is committed to servicing your Uroview FD correctly the first time. Expert Field Service Engineers average 16 years of experience and fulfill more than 14,000 collective hours of training each year, while a team of more than 50 GE OEC dedicated Clinical Imaging Specialists train more than 15,000 surgeons and technologists each year.

You are covered.

With GE OEC engineers in all 50 states and a 30-minute call-back commitment, someone is there for you when you need support. Your Uroview FD meticulously maintained and running at peak performance is better for you and better for your patients.

Flexible service configurations.

To extend your Uroview FD's power and performance, choose a GE OEC service offering that best fits your needs. The full-service, Primary Care coverage boasts a 97% uptime guarantee with scheduled preventative maintenance and offers many benefits including unlimited parts and labor features. Limited Service coverage is also available and provides technical phone support, back-up on-site support, and discounts on Uroview FD parts and accessories.

©2016 General Electric Company — All rights reserved.

General Electric Company reserves the right to discontinue selling the product. Contact your GE representative for the most current information.

GE, GE Monogram, and OEC are trademarks of General Electric Company.

OEC Medical Systems, Inc., a General Electric company, going to market as GE Healthcare.

Healthcare Re-imagined

GE is dedicated to helping you transform healthcare delivery by driving critical breakthroughs in biology and technology. Our expertise in medical imaging and information technologies, medical diagnostics, patient monitoring systems, drug discovery, and biopharmaceutical manufacturing technologies is enabling healthcare professionals around the world discover new ways to predict, diagnose and treat disease earlier. We call this model of care "Early Health." The goal: to help clinicians detect disease earlier, access more information and intervene earlier with more targeted treatments, so they can help their patients live their lives to the fullest. Re-think, Re-discover, Re-invent, Re-imagine.

Distributed by:
GE Healthcare
384 Wright Brothers Drive
Salt Lake City, UT 84116
USA

GE Healthcare,
Surgery — Americas
Phone: 801-328-9300
Fax: 801-328-4300

GE OEC is an authorized distributor of Uroview FD which is manufactured by PAUSCH Medical GmbH, Germany

www.gehealthcare.com



imagination at work

Authorized Distributor
GE Healthcare

JB39494US(1)